

SERIE

A

CILINDRI COMPATTI UNITOP
UNITOP COMPACT CYLINDERS

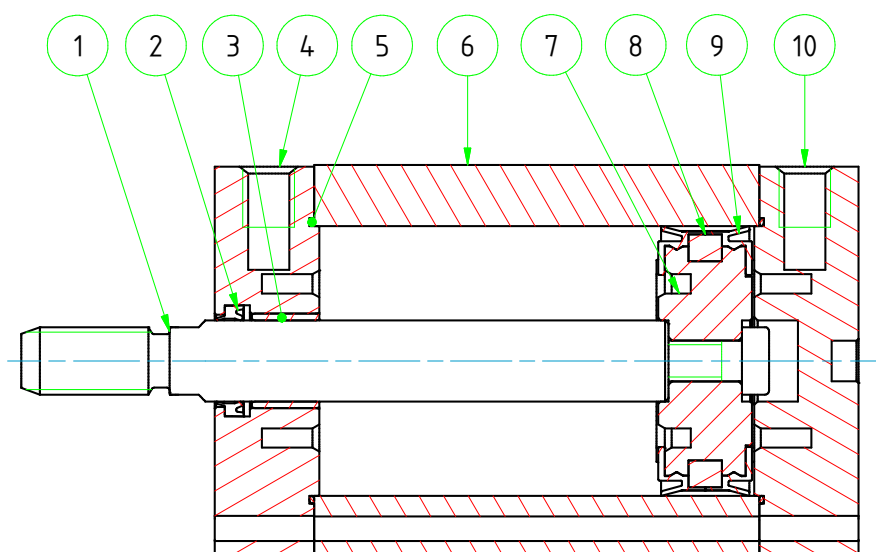

ARTEC[®]
PNEUMATIC COMPONENTS

CARATTERISTICHE TECNICHE - TECHNICAL CHARACTERISTICS

Pressione di esercizio <i>Working pressure</i>	1 ÷ 10 bar (doppio effetto - <i>double acting</i>) 2 ÷ 10 bar (semplice effetto - <i>single acting</i>)
Temperatura di esercizio <i>Working temperature</i>	0 ÷ +80°C (-20°C con aria secca - <i>with dry air</i>) 0 ÷ +150°C (con guarnizioni per alte temperature - <i>with high temperature seals</i>)
Versioni - Versions	semplice effetto - doppio effetto - antirotazione - stelo passante <i>single acting - double acting - anti-rotation - double rod</i>
Alesaggi - Bores	∅ 12 - 16 - 20 - 25 - 32 - 40 - 50 - 63 - 80 - 100
Corse - Strokes	vedere tabelle corse standard - <i>see standard stroke tables</i>
Fluido - Fluid	aria compressa filtrata, non lubrificata - <i>compressed filtered, non lubricated air</i>

CARATTERISTICHE COSTRUTTIVE - CONSTRUCTIVE CHARACTERISTICS

①	Stelo - Rod	acciaio inox AISI 303 - <i>stainless steel AISI 303</i>
② ⑩	Guarnizioni - Seals	poliuretano - <i>polyurethane</i>
③	Boccola - Bush	acciaio+PTFE - <i>steel+PTFE</i>
④ ⑫	Testate - Covers	alluminio anodizzato - <i>anodized aluminium</i>
⑤ ⑪	O-ring	NBR
⑥	Tube - Tube	alluminio anodizzato - <i>anodized aluminium</i>
⑦ ⑨	Pistone - Piston	alluminio - <i>aluminium</i>
⑧	Magnete - Magnet	∅ 12 ÷ 50 neodimio - <i>neodymium alloy</i> ∅ 63 ÷ 100 plastoferrite - <i>rubber magnet</i>
	Viti - Screws	acciaio zincato - <i>zinc coated steel</i>
	Molla - Spring	acciaio - <i>steel</i>
	Paracolpo - Bumper	poliuretano - <i>polyurethane</i>



CHIAVE DI CODIFICA

KEY CODE

A D M		0 5 0 . 0 3 0 . G S . F				
		ALESAGGIO - BORE (Ø) 012-016-020-025-032 040-050-063-080-100		CORSA - STROKE (mm) vedere tabelle corse std see std stroke tables		OPZIONE - OPTION EX ATEX II 2GD cT4
		VERSIONE - VERSION A con staffa antirotazione with anti-rotation bracket				STELO - ROD F femmina female M maschio male
		VERSIONE - VERSION P stelo passante double rod				GUARNIZIONI - SEALS GS guarnizioni standard standard seals VR guarnizione stelo per alte temperature high temperature rod seal VA tutte le guarnizioni per alte temperature all seals for high temperature
		VERSIONE - VERSION M magnetico magnetic non magnetico non-magnetic				
		VERSIONE - VERSION S semplice effetto molla anteriore single acting front spring SE semplice effetto molla posteriore single acting rear spring D doppio effetto double acting				
SERIE - SERIES A tubo profilato con cave per sensori tube with slots for sensors						

SERIE

A

ESECUZIONI A RICHIESTA - ON REQUEST

Stelo forato - *Hollow rod*

Stelo prolungato (W) - *Extended rod (W)*

Filetti speciali (dado stelo non fornito) - *Special thread (without rod nut)*

ATEX II 2GD cT4

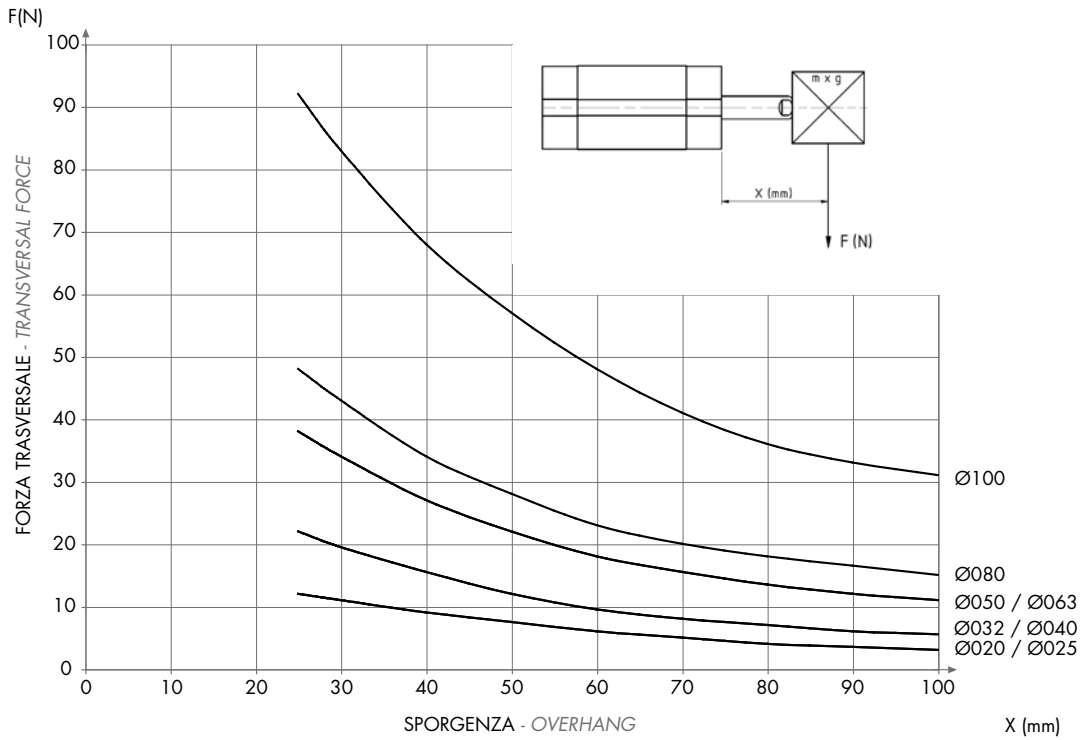
FORZE TEORICHE DI TRAZIONE (P=6bar)

THEORETICAL FORCES OF TRACTION (P=6bar)

		Ø	012/016	020	025	032	040	050	063	080	100
ADM	SPINTA THRUST	[N]	121	188	295	482	754	1.178	1.869	3.014	4.710
	TRAZIONE TRACTION	[N]	91	142	248	415	687	1.058	1.750	2.829	4.420
ADMA	SPINTA THRUST	[N]	121	188	295	483	754	1.178	1.869	3.014	4.710
	TRAZIONE TRACTION	[N]	91	142	248	415	687	1.058	1.750	2.829	4.420
ADMP	SPINTA THRUST	[N]	91	142	248	415	687	1.058	1.750	2.829	4.420
	TRAZIONE TRACTION	[N]	91	142	248	415	687	1.058	1.750	2.829	4.420
ADMPA	SPINTA THRUST	[N]	91	142	248	415	687	1.058	1.750	2.829	4.420
	TRAZIONE TRACTION	[N]	90	142	248	415	687	1.058	1.750	2.829	4.420

DIAGRAMMA TEORICO CARICO AMMISSIBILE

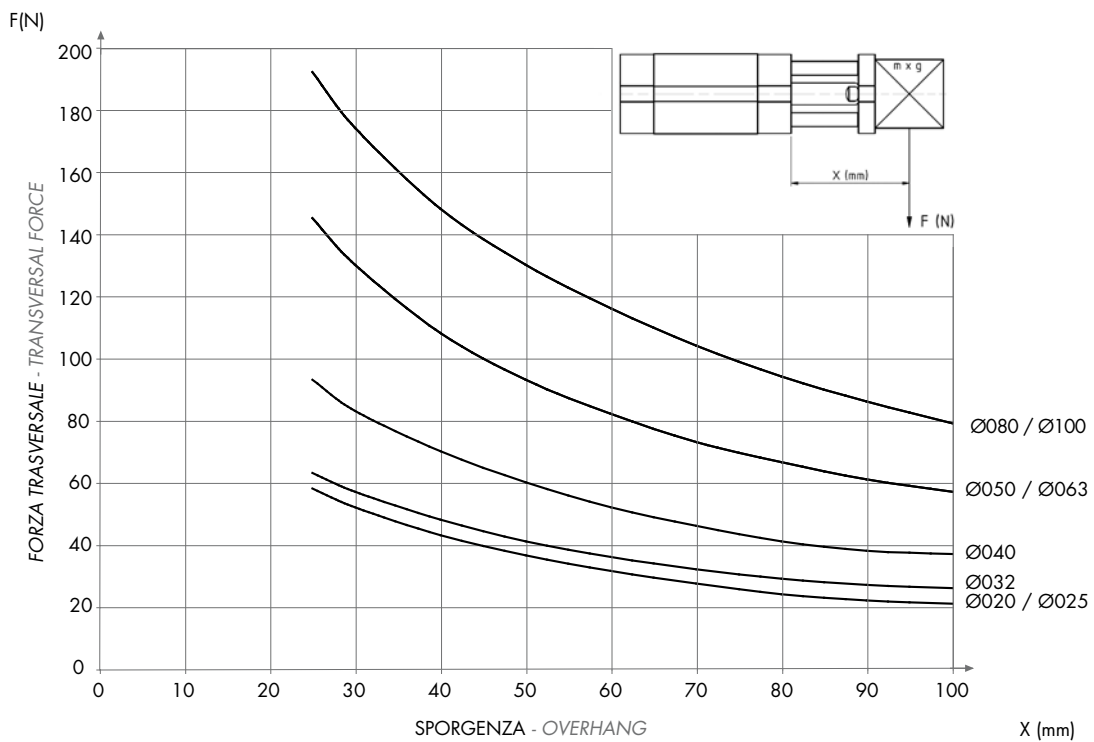
THEORETICAL ALLOWABLE LOAD



SERIE
A

DIAGRAMMA TEORICO CARICO AMMISSIBILE

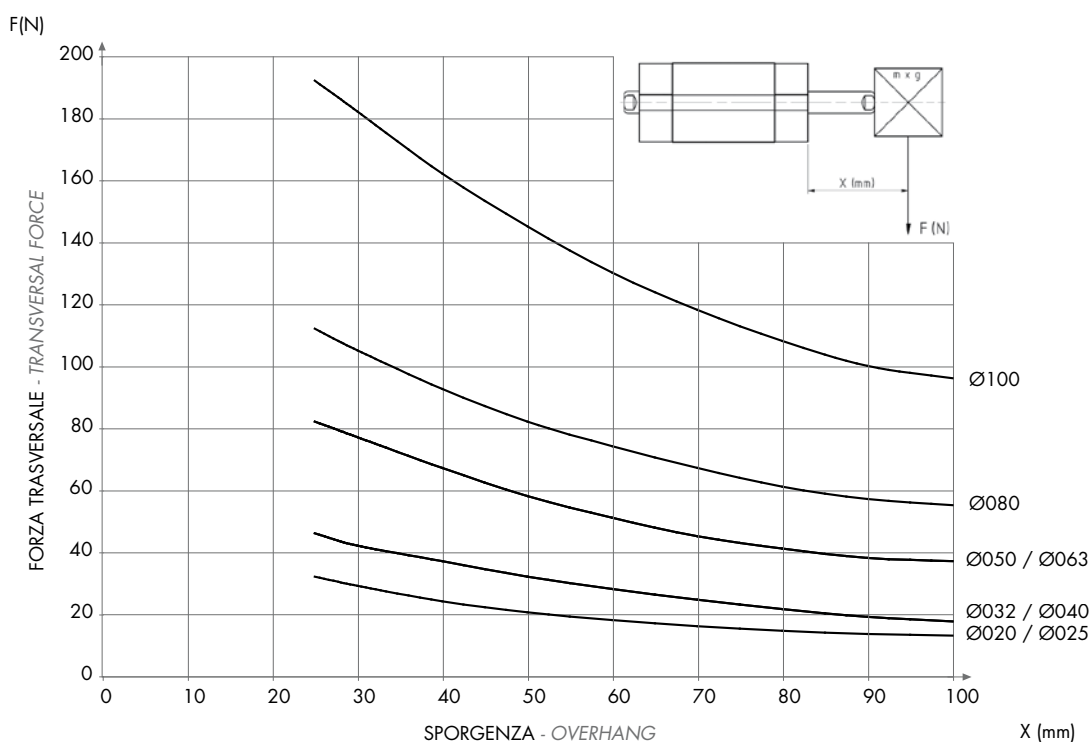
THEORETICAL ALLOWABLE LOAD



ADMP

DIAGRAMMA TEORICO CARICO AMMISSIBILE

THEORETICAL ALLOWABLE LOAD

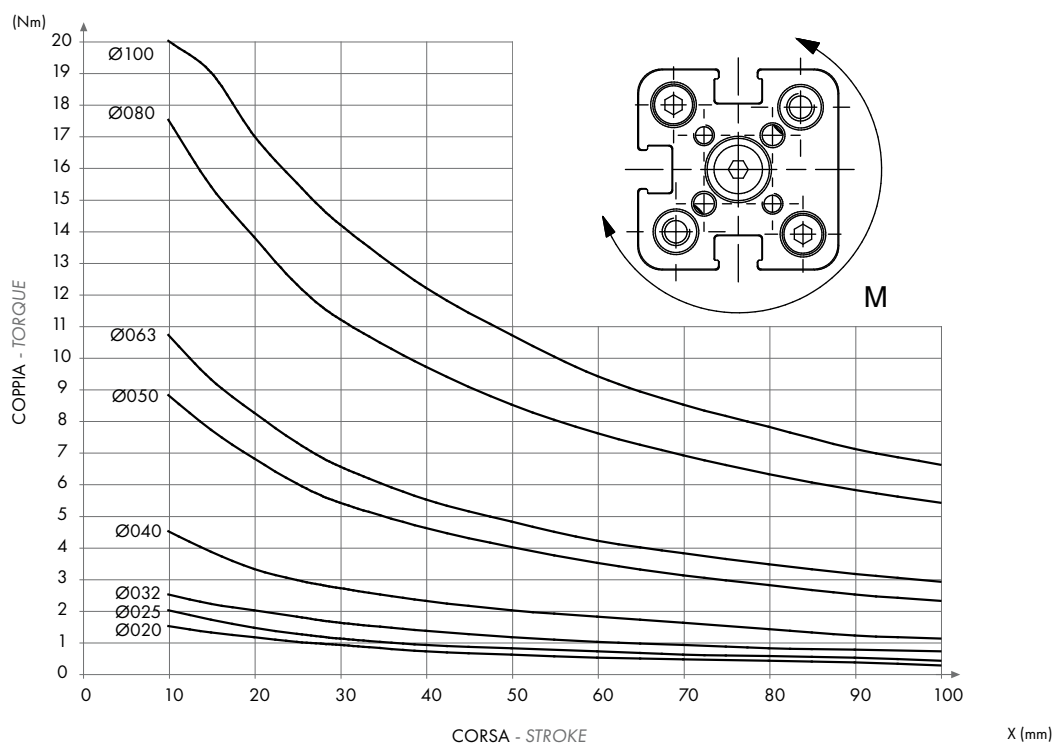


SERIE
A

DIAGRAMMA TEORICO COPPIA AMMISSIBILE

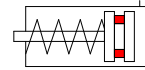
ADMA

THEORETICAL ALLOWABLE TORQUE

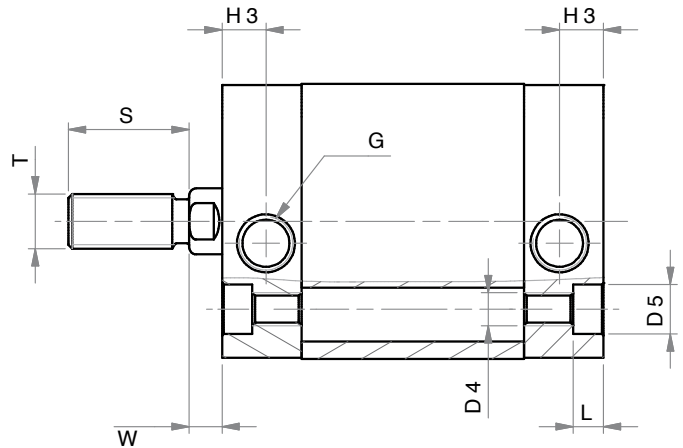
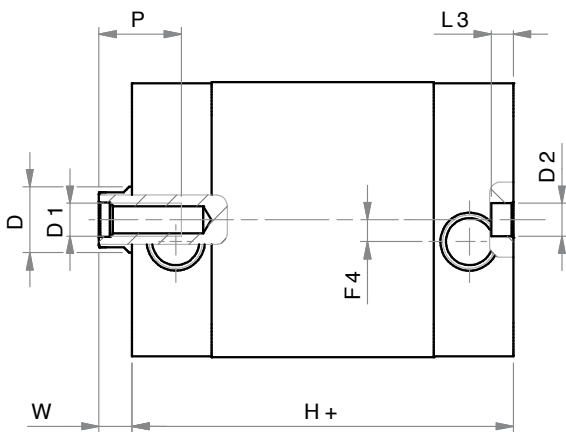
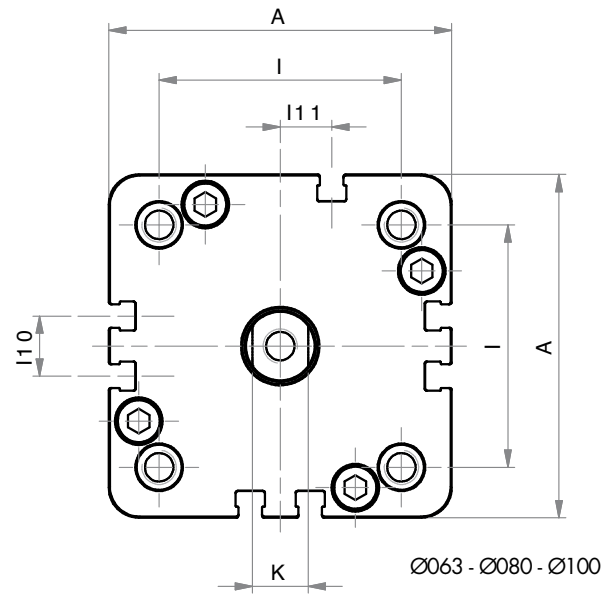
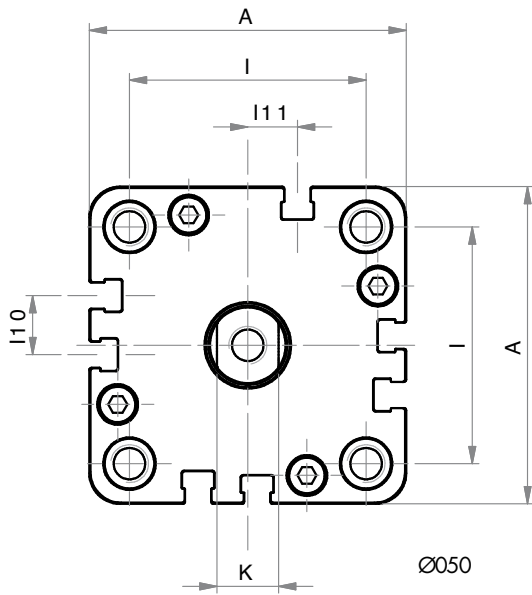
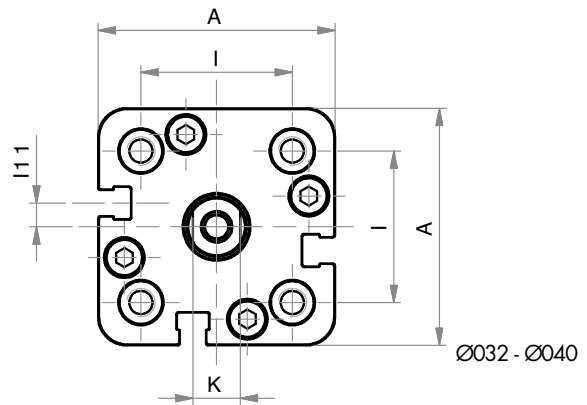
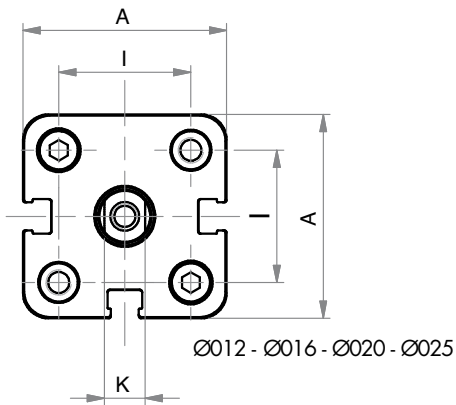


SEMPLICE EFFETTO MAGNETICO - MOLLA ANTERIORE

SINGLE ACTING MAGNETIC - FRONT SPRING



SERIE
A



SEMPLICE EFFETTO MAGNETICO - MOLLA ANTERIORE
SINGLE ACTING MAGNETIC - FRONT SPRING

DIMENSIONI - DIMENSIONS										
Ø	012	016	020	025	032	040	050	063	080	100
A	29	29	36	40	50	58	67	80	100	124
Ø D	6	8	10	10	12	12	16	16	20	25
D1	M3	M4	M5	M5	M6	M6	M8	M8	M10	M12
Ø D2	6	6	6	6	6	6	6	8	8	8
D4	M4	M4	M5	M5	M6	M6	M8	M10	M10	M10
Ø D5	6	6	7,5	7,5	9	9	10,5	13,5	13,5	13,5
F4	-	-	-	-	4	3	-	-	-	-
G	M5	M5	M5	M5	G1/8	G1/8	G1/8	G1/8	G1/8	G1/4
H+	38*	38*	38*	39,5*	44,5*	45,5*	45,5*	50*	56*	66,5*
H3	8	8	8	8	8	8	8	8	8,5	10,5
I	18	18	22	26	32	42	50	62	82	103
I10	-	-	-	-	-	-	12,5	14	18	35
I11	-	-	-	-	5	3	10,5	12	12	17,5
K	5	6	8	8	10	10	13	13	17	22
L	3,5	3,5	4,5	4,5	5,5	5,5	6,5	8,5	8,5	8,5
L3	4	4	4	4	4	4	4	4	4	4
P	8	11	12	12	15	15	17	17	17	22
S	16	20	22	22	22	22	24	24	32	40
T	M6	M8	M10x1,25	M10x1,25	M10x1,25	M10x1,25	M12x1,25	M12x1,25	M16x1,5	M20x1,5
W	4,5	4,5	4,5	5,5	6	6,5	7,5	7,5	8	10

+ = aggiungere lunghezza corsa (mm) - add stroke length (mm)

* per corse - for strokes 035 - 040 - 050 - 060:

ASM 012 - 016 - 020 aggiungere - add +10 mm

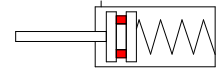
ASM 025 - 032 - 040 - 050 - 063 aggiungere - add +20 mm

ASM 080 - 100 aggiungere - add +30 mm

Ø	CORSE STANDARD - STANDARD STROKES
012	5 - 10 - 15 - 20 - 25 - 30 - 35 - 40 - 50 - 60
016	5 - 10 - 15 - 20 - 25 - 30 - 35 - 40 - 50 - 60
020	5 - 10 - 15 - 20 - 25 - 30 - 35 - 40 - 50 - 60
025	5 - 10 - 15 - 20 - 25 - 30 - 35 - 40 - 50 - 60
032	5 - 10 - 15 - 20 - 25 - 30 - 35 - 40 - 50 - 60
040	5 - 10 - 15 - 20 - 25 - 30 - 35 - 40 - 50 - 60
050	5 - 10 - 15 - 20 - 25 - 30 - 35 - 40 - 50 - 60
063	5 - 10 - 15 - 20 - 25 - 30 - 35 - 40 - 50 - 60
080	5 - 10 - 15 - 20 - 25 - 30 - 35 - 40 - 50 - 60
100	5 - 10 - 15 - 20 - 25 - 30 - 35 - 40 - 50 - 60

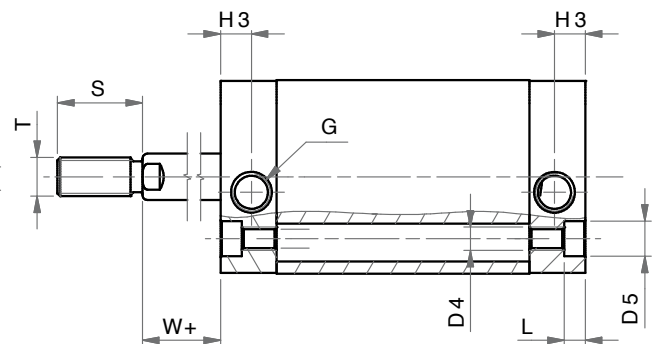
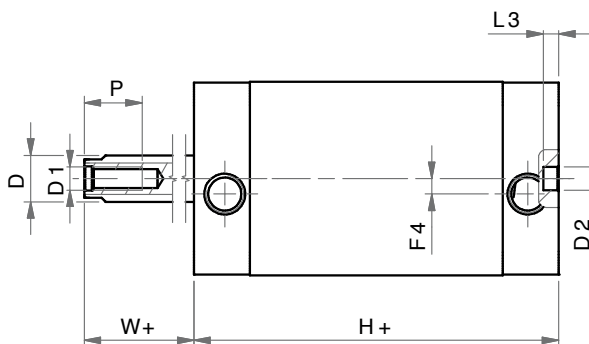
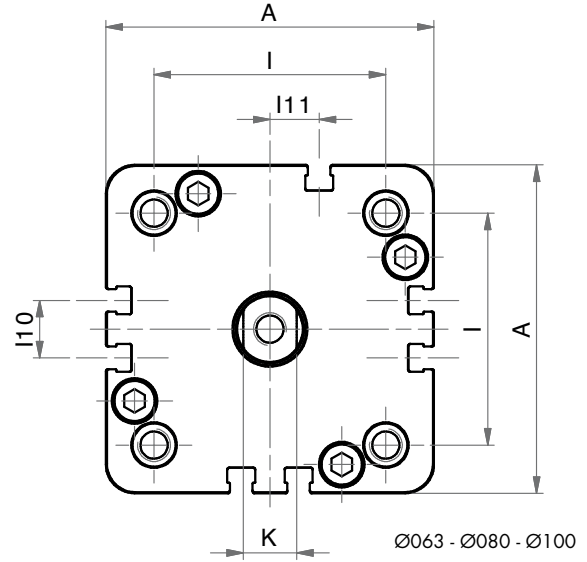
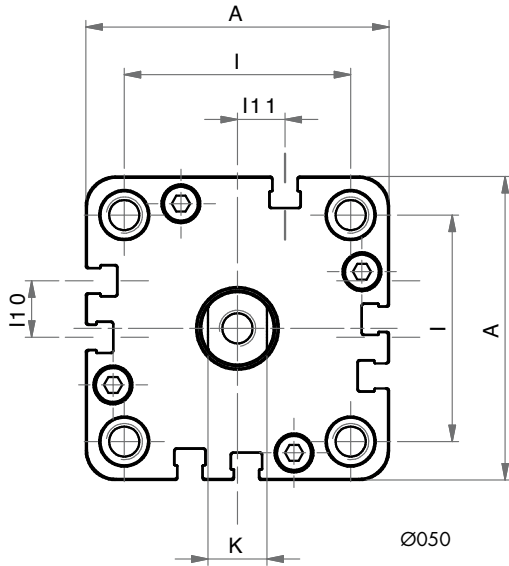
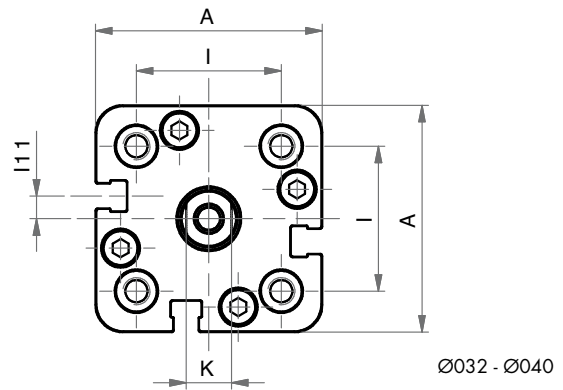
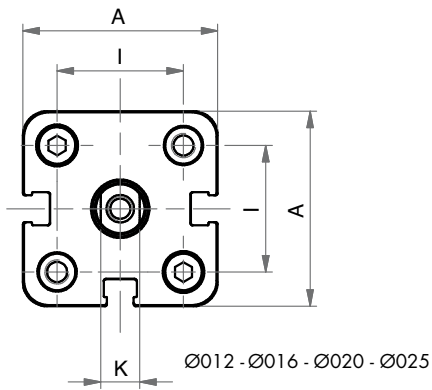
SEMPLICE EFFETTO MAGNETICO - MOLLA POSTERIORE

SINGLE ACTING MAGNETIC - REAR SPRING



SERIE

A



SEMPLICE EFFETTO MAGNETICO - MOLLA POSTERIORE
SINGLE ACTING MAGNETIC - REAR SPRING

DIMENSIONI - DIMENSIONS										
Ø	012	016	020	025	032	040	050	063	080	100
A	29	29	36	40	50	58	67	80	100	124
Ø D	6	8	10	10	12	12	16	16	20	25
D1	M3	M4	M5	M5	M6	M6	M8	M8	M10	M12
Ø D2	6	6	6	6	6	6	6	8	8	8
D4	M4	M4	M5	M5	M6	M6	M8	M10	M10	M10
Ø D5	6	6	7,5	7,5	9	9	10,5	13,5	13,5	13,5
F4	-	-	-	-	4	3	-	-	-	-
G	M5	M5	M5	M5	G1/8	G1/8	G1/8	G1/8	G1/8	G1/4
H+	38*	38*	38*	39,5*	44,5*	45,5*	45,5*	50*	56*	66,5*
H3	8	8	8	8	8	8	8	8	8,5	10,5
I	18	18	22	26	32	42	50	62	82	103
I10	-	-	-	-	-	-	12,5	14	18	35
I11	-	-	-	-	5	3	10,5	12	12	17,5
K	5	6	8	8	10	10	13	13	17	22
L	3,5	3,5	4,5	4,5	5,5	5,5	6,5	8,5	8,5	8,5
L3	4	4	4	4	4	4	4	4	4	4
P	8	11	12	12	15	15	17	17	17	22
S	16	20	22	22	22	22	24	24	32	40
T	M6	M8	M10x1,25	M10x1,25	M10x1,25	M10x1,25	M12x1,25	M12x1,25	M16x1.5	M20x1.5
W+	4,5	4,5	4,5	5,5	6	6,5	7,5	7,5	8	10

+ = aggiungere lunghezza corsa (mm) - add stroke length (mm)

* per corse - for strokes 035-040-050-060:

ASEM 012 - 016 - 020 - 025 - 032 - 040 - 050 - 063 aggiungere - add +10 mm

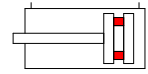
ASEM 080 - 100 aggiungere - add +20 mm

Ø	CORSE STANDARD - STANDARD STROKES
012	5 - 10 - 15 - 20 - 25 - 30 - 35 - 40 - 50 - 60
016	5 - 10 - 15 - 20 - 25 - 30 - 35 - 40 - 50 - 60
020	5 - 10 - 15 - 20 - 25 - 30 - 35 - 40 - 50 - 60
025	5 - 10 - 15 - 20 - 25 - 30 - 35 - 40 - 50 - 60
032	5 - 10 - 15 - 20 - 25 - 30 - 35 - 40 - 50 - 60
040	5 - 10 - 15 - 20 - 25 - 30 - 35 - 40 - 50 - 60
050	5 - 10 - 15 - 20 - 25 - 30 - 35 - 40 - 50 - 60
063	5 - 10 - 15 - 20 - 25 - 30 - 35 - 40 - 50 - 60
080	5 - 10 - 15 - 20 - 25 - 30 - 35 - 40 - 50 - 60
100	5 - 10 - 15 - 20 - 25 - 30 - 35 - 40 - 50 - 60

SERIE
A

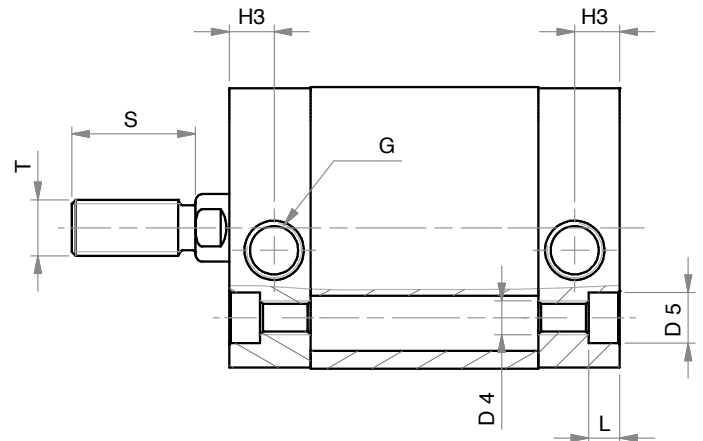
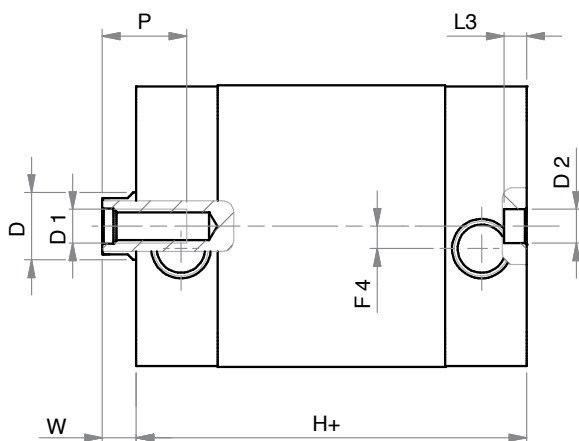
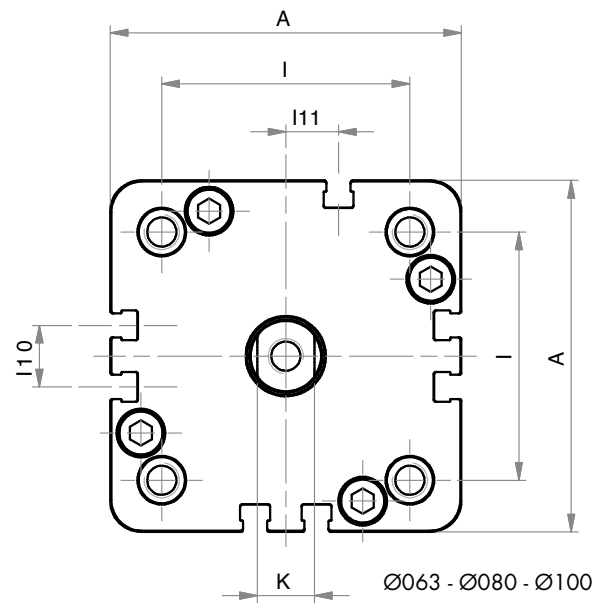
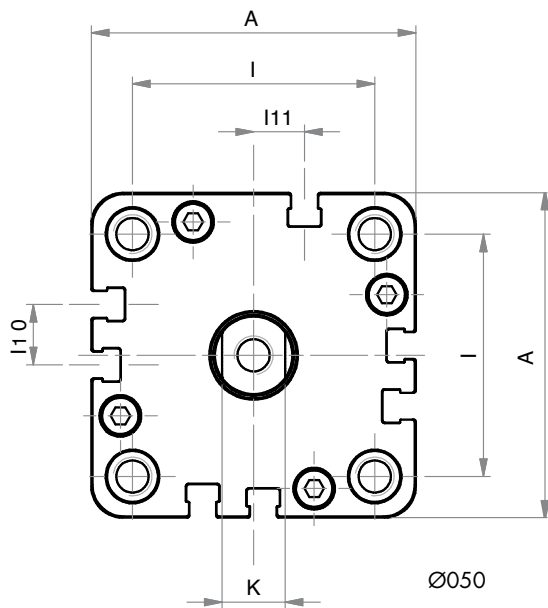
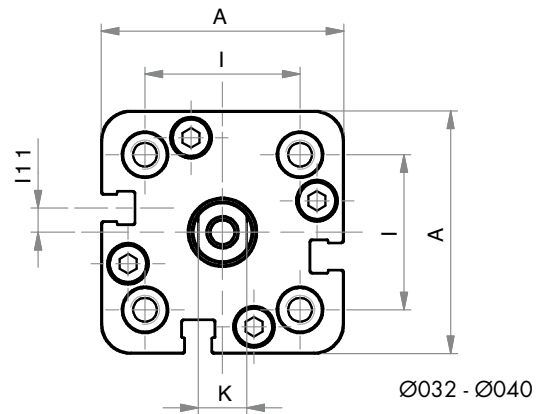
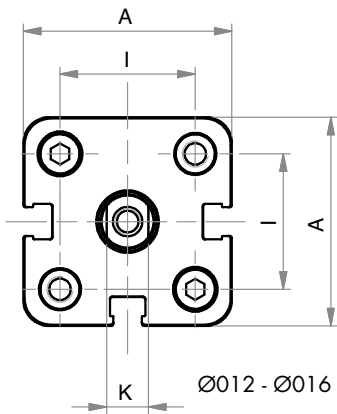
DOPPIO EFFETTO MAGNETICO

DOUBLE ACTING MAGNETIC



SERIE

A



DOPPIO EFFETTO MAGNETICO
DOUBLE ACTING MAGNETIC

DIMENSIONI - DIMENSIONS										
Ø	012	016	020	025	032	040	050	063	080	100
A	29	29	36	40	50	58	67	80	100	124
Ø D	6	8	10	10	12	12	16	16	20	25
D1	M3	M4	M5	M5	M6	M6	M8	M8	M10	M12
Ø D2	6	6	6	6	6	6	6	8	8	8
D4	M4	M4	M5	M5	M6	M6	M8	M10	M10	M10
Ø D5	6	6	7,5	7,5	9	9	10,5	13,5	13,5	13,5
F4	-	-	-	-	4	3	-	-	-	-
G	M5	M5	M5	M5	G1/8	G1/8	G1/8	G1/8	G1/8	G1/4
H+	38	38	38	39,5	44,5	45,5	45,5	50	56	66,5
H3	8	8	8	8	8	8	8	8	8,5	10,5
I	18	18	22	26	32	42	50	62	82	103
I10	-	-	-	-	-	-	12,5	14	18	35
I11	-	-	-	-	5	3	10,5	12	12	17,5
K	5	6	8	8	10	10	13	13	17	22
L	3,5	3,5	4,5	4,5	5,5	5,5	6,5	8,5	8,5	8,5
L3	4	4	4	4	4	4	4	4	4	4
P	8	11	12	12	15	15	17	17	17	22
S	16	20	22	22	22	22	24	24	32	40
T	M6	M8	M10x1,25	M10x1,25	M10x1,25	M10x1,25	M12x1,25	M12x1,25	M16x1.5	M20x1.5
W	4,5	4,5	4,5	5,5	6	6,5	7,5	7,5	8	10

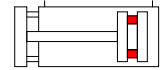
+ = aggiungere lunghezza corsa (mm) - add stroke length (mm)

Ø	CORSE STANDARD - STANDARD STROKES
012	5 - 10 - 15 - 20 - 25 - 30 - 40 - 50 - 60 - 70 - 75 - 80 - 90 - 100 - 125 - 160 - 200 - 250
016	5 - 10 - 15 - 20 - 25 - 30 - 40 - 50 - 60 - 70 - 75 - 80 - 90 - 100 - 125 - 160 - 200 - 250
020	5 - 10 - 15 - 20 - 25 - 30 - 40 - 50 - 60 - 70 - 75 - 80 - 90 - 100 - 125 - 160 - 200 - 250
025	5 - 10 - 15 - 20 - 25 - 30 - 40 - 50 - 60 - 70 - 75 - 80 - 90 - 100 - 125 - 160 - 200 - 250
032	5 - 10 - 15 - 20 - 25 - 30 - 40 - 50 - 60 - 70 - 75 - 80 - 90 - 100 - 125 - 160 - 200 - 250 - 300 - 350 - 400
040	5 - 10 - 15 - 20 - 25 - 30 - 40 - 50 - 60 - 70 - 75 - 80 - 90 - 100 - 125 - 160 - 200 - 250 - 300 - 350 - 400
050	5 - 10 - 15 - 20 - 25 - 30 - 40 - 50 - 60 - 70 - 75 - 80 - 90 - 100 - 125 - 160 - 200 - 250 - 300 - 350 - 400
063	5 - 10 - 15 - 20 - 25 - 30 - 40 - 50 - 60 - 70 - 75 - 80 - 90 - 100 - 125 - 160 - 200 - 250 - 300 - 350 - 400
080	5 - 10 - 15 - 20 - 25 - 30 - 40 - 50 - 60 - 70 - 75 - 80 - 90 - 100 - 125 - 160 - 200 - 250 - 300 - 350 - 400
100	5 - 10 - 15 - 20 - 25 - 30 - 40 - 50 - 60 - 70 - 75 - 80 - 90 - 100 - 125 - 160 - 200 - 250 - 300 - 350 - 400

SERIE
A

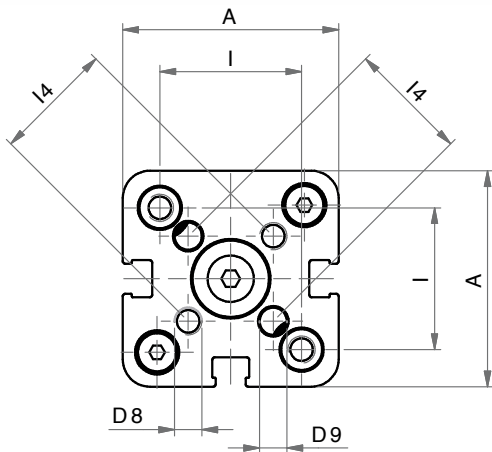
DOPPIO EFFETTO MAGNETICO ANTIROTAZIONE

DOUBLE ACTING MAGNETIC ANTI-ROTATION

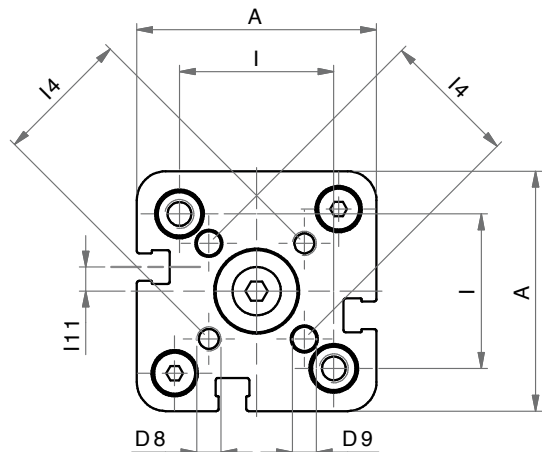


SERIE

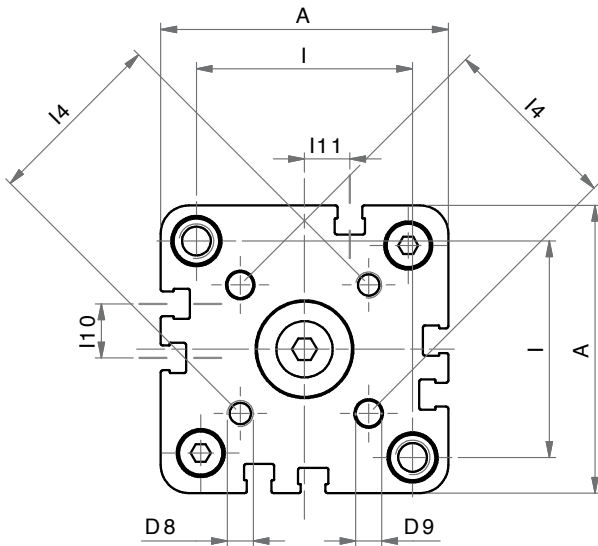
A



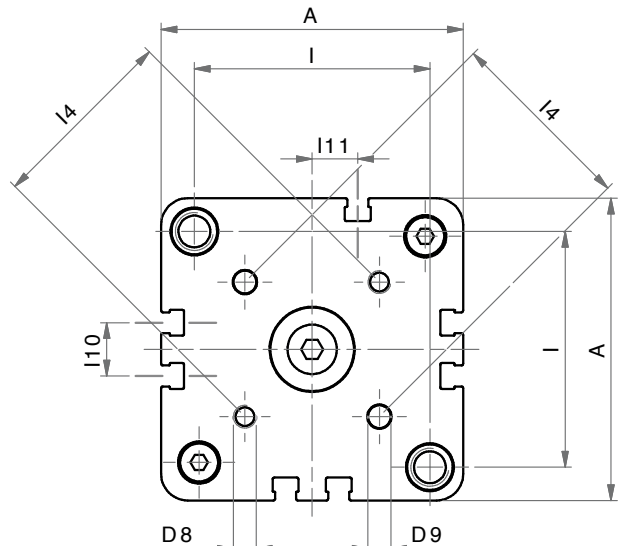
Ø16 - Ø20 - Ø25



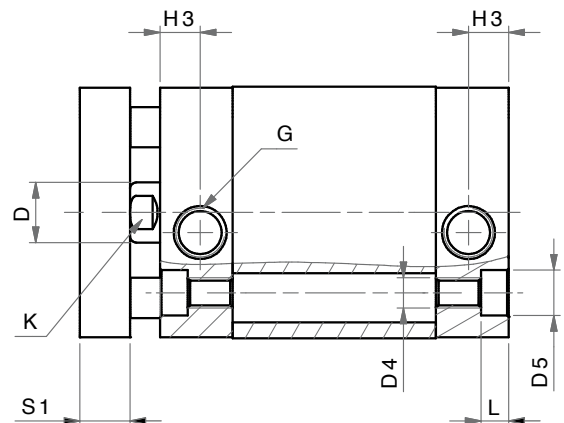
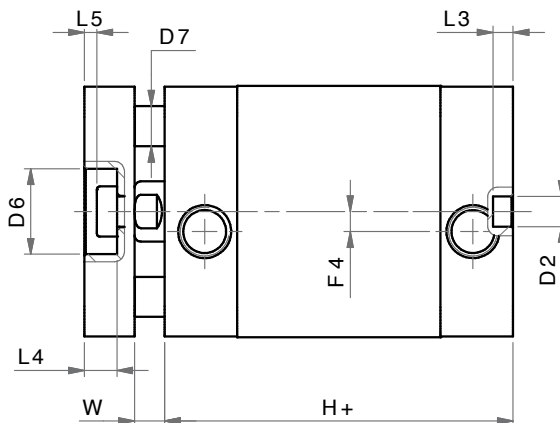
Ø32 - Ø40



Ø50



Ø63 - Ø80 - Ø100



DOPPIO EFFETTO MAGNETICO ANTIROTAZIONE
DOUBLE ACTING MAGNETIC ANTI-ROTATION

DIMENSIONI - DIMENSIONS									
Ø	016	020	025	032	040	050	063	080	100
A	29	36	40	50	58	67	80	100	124
Ø D	8	10	10	12	12	16	16	20	25
Ø D2	6	6	6	6	6	6	8	8	8
D4	M4	M5	M5	M6	M6	M8	M10	M10	M10
Ø D5	6	7,5	7,5	9	9	10,5	13,5	13,5	13,5
Ø D6	9	11	14	17	17	22	22	28	30
Ø D7	5	5	6	8	10	10	10	14	14
D8	M3	M4	M5	M5	M5	M6	M6	M8	M10
Ø D9	3	4	5	5	5	6	6	8	10
F4	-	-	-	4	3	-	-	-	-
G	M5	M5	M5	G1/8	G1/8	G1/8	G1/8	G1/8	G1/4
H+	38	38	39,5	44,5	45,5	45,5	50	56	66,5
H3	8	8	8	8	8	8	8	8,5	10,5
I	18	22	26	32	42	50	62	82	103
I4	14	17	22	28	33	42	50	65	80
I10	-	-	-	-	-	12,5	14	18	35
I11	-	-	-	5	3	10,5	12	12	17,5
K	6	8	8	10	10	13	13	17	22
L	3,5	4,5	4,5	5,5	5,5	6,5	8,5	8,5	8,5
L3	4	4	4	4	4	4	4	4	4
L4	3,8	5	5	6,5	6,5	7,5	7,5	9	10
L5	1	1,5	1,5	2,5	2,5	2,5	2,5	3	3
S1	6	8	8	10	10	12	12	14	14
W	4,5	4,5	5,5	6	6,5	7,5	7,5	8	10

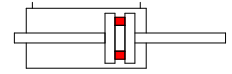
+ = aggiungere lunghezza corsa (mm) - add stroke length (mm)

Ø	CORSE STANDARD - STANDARD STROKES
016	5 - 10 - 15 - 20 - 25 - 30 - 40 - 50 - 60 - 70 - 75 - 80 - 90 - 100 - 125 - 160 - 200
020	5 - 10 - 15 - 20 - 25 - 30 - 40 - 50 - 60 - 70 - 75 - 80 - 90 - 100 - 125 - 160 - 200
025	5 - 10 - 15 - 20 - 25 - 30 - 40 - 50 - 60 - 70 - 75 - 80 - 90 - 100 - 125 - 160 - 200
032	5 - 10 - 15 - 20 - 25 - 30 - 40 - 50 - 60 - 70 - 75 - 80 - 90 - 100 - 125 - 160 - 200 - 250 - 300 - 350 - 400
040	5 - 10 - 15 - 20 - 25 - 30 - 40 - 50 - 60 - 70 - 75 - 80 - 90 - 100 - 125 - 160 - 200 - 250 - 300 - 350 - 400
050	5 - 10 - 15 - 20 - 25 - 30 - 40 - 50 - 60 - 70 - 75 - 80 - 90 - 100 - 125 - 160 - 200 - 250 - 300 - 350 - 400
063	5 - 10 - 15 - 20 - 25 - 30 - 40 - 50 - 60 - 70 - 75 - 80 - 90 - 100 - 125 - 160 - 200 - 250 - 300 - 350 - 400
080	5 - 10 - 15 - 20 - 25 - 30 - 40 - 50 - 60 - 70 - 75 - 80 - 90 - 100 - 125 - 160 - 200 - 250 - 300 - 350 - 400
100	5 - 10 - 15 - 20 - 25 - 30 - 40 - 50 - 60 - 70 - 75 - 80 - 90 - 100 - 125 - 160 - 200 - 250 - 300 - 350 - 400

SERIE
A

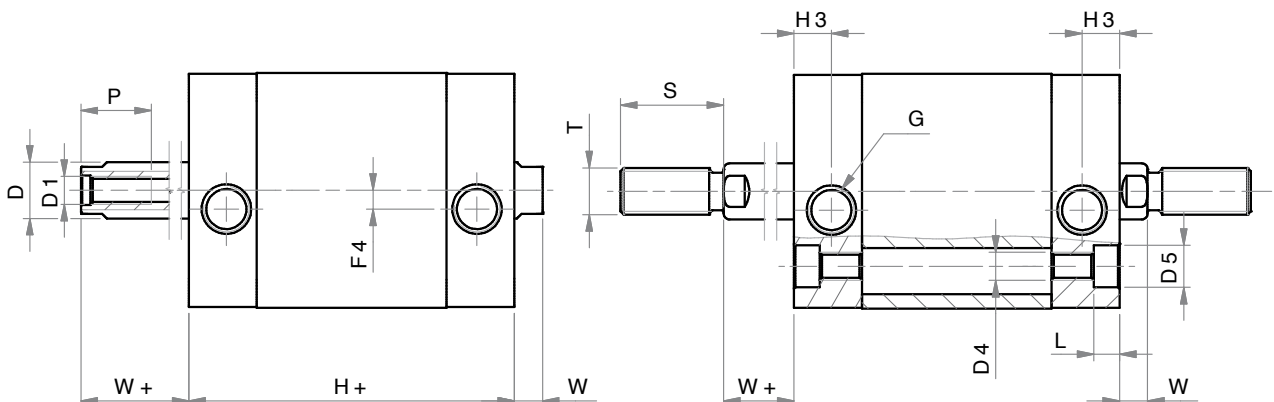
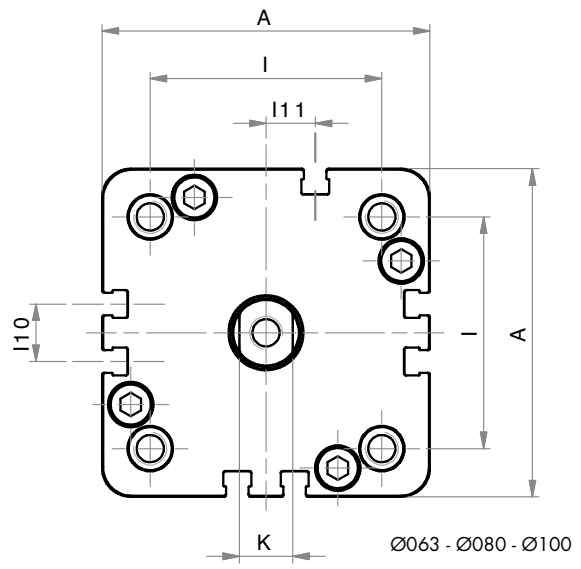
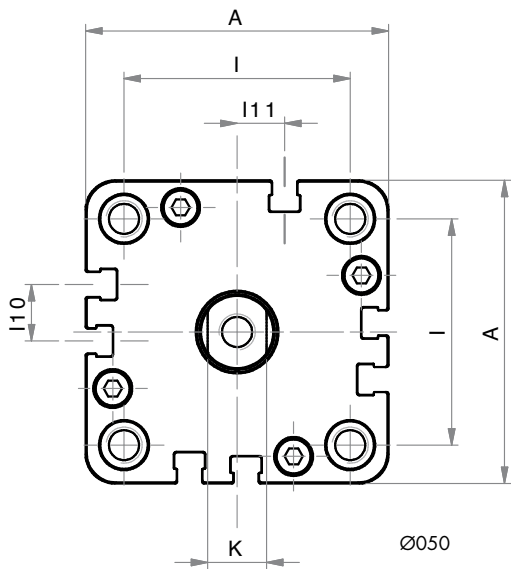
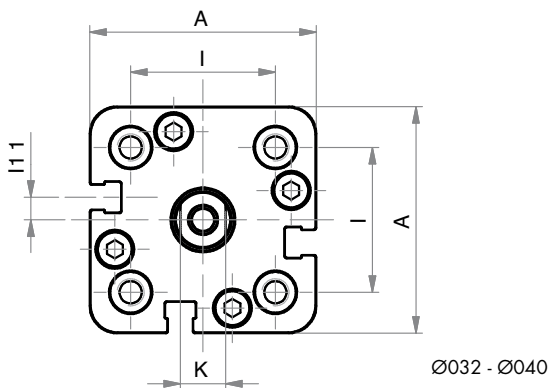
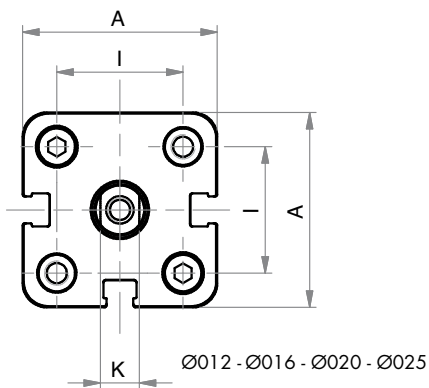
DOPPIO EFFETTO MAGNETICO STELO PASSANTE

DOUBLE ACTING MAGNETIC WITH DOUBLE ROD



SERIE

A



DOPPIO EFFETTO MAGNETICO STELO PASSANTE
DOUBLE ACTING MAGNETIC WITH DOUBLE ROD

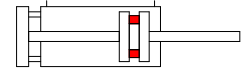
DIMENSIONI - DIMENSIONS										
Ø	012	016	020	025	032	040	050	063	080	100
A	29	29	36	40	50	58	67	80	100	124
Ø D	6	8	10	10	12	12	16	16	20	25
D1	M3	M4	M5	M5	M6	M6	M8	M8	M10	M12
D4	M4	M4	M5	M5	M6	M6	M8	M10	M10	M10
Ø D5	6	6	7,5	7,5	9	9	10,5	13,5	13,5	13,5
F4	-	-	-	-	4	3	-	-	-	-
G	M5	M5	M5	M5	G1/8	G1/8	G1/8	G1/8	G1/8	G1/4
H+	38	38	38	39,5	44,5	45,5	45,5	50	56	66,5
H3	8	8	8	8	8	8	8	8	8,5	10,5
I	18	18	22	26	32	42	50	62	82	103
I10	-	-	-	-	-	-	12,5	14	18	35
I11	-	-	-	-	5	3	10,5	12	12	17,5
K	5	6	8	8	10	10	13	13	17	22
L	3,5	3,5	4,5	4,5	5,5	5,5	6,5	8,5	8,5	8,5
P	8	11	12	12	15	15	17	17	17	22
S	16	20	22	22	22	22	24	24	32	40
T	M6	M8	M10x1,25	M10x1,25	M10x1,25	M10x1,25	M12x1,25	M12x1,25	M16x1.5	M20x1.5
W	4,5	4,5	4,5	5,5	6	6,5	7,5	7,5	8	10
W+	4,5	4,5	4,5	5,5	6	6,5	7,5	7,5	8	10

+ = aggiungere lunghezza corsa (mm) - add stroke length (mm)

Ø	CORSE STANDARD - STANDARD STROKES
012	5 - 10 - 15 - 20 - 25 - 30 - 40 - 50 - 60 - 70 - 75 - 80 - 90 - 100 - 125 - 160 - 200 - 250
016	5 - 10 - 15 - 20 - 25 - 30 - 40 - 50 - 60 - 70 - 75 - 80 - 90 - 100 - 125 - 160 - 200 - 250
020	5 - 10 - 15 - 20 - 25 - 30 - 40 - 50 - 60 - 70 - 75 - 80 - 90 - 100 - 125 - 160 - 200 - 250
025	5 - 10 - 15 - 20 - 25 - 30 - 40 - 50 - 60 - 70 - 75 - 80 - 90 - 100 - 125 - 160 - 200 - 250
032	5 - 10 - 15 - 20 - 25 - 30 - 40 - 50 - 60 - 70 - 75 - 80 - 90 - 100 - 125 - 160 - 200 - 250 - 300 - 350 - 400
040	5 - 10 - 15 - 20 - 25 - 30 - 40 - 50 - 60 - 70 - 75 - 80 - 90 - 100 - 125 - 160 - 200 - 250 - 300 - 350 - 400
050	5 - 10 - 15 - 20 - 25 - 30 - 40 - 50 - 60 - 70 - 75 - 80 - 90 - 100 - 125 - 160 - 200 - 250 - 300 - 350 - 400
063	5 - 10 - 15 - 20 - 25 - 30 - 40 - 50 - 60 - 70 - 75 - 80 - 90 - 100 - 125 - 160 - 200 - 250 - 300 - 350 - 400
080	5 - 10 - 15 - 20 - 25 - 30 - 40 - 50 - 60 - 70 - 75 - 80 - 90 - 100 - 125 - 160 - 200 - 250 - 300 - 350 - 400
100	5 - 10 - 15 - 20 - 25 - 30 - 40 - 50 - 60 - 70 - 75 - 80 - 90 - 100 - 125 - 160 - 200 - 250 - 300 - 350 - 400

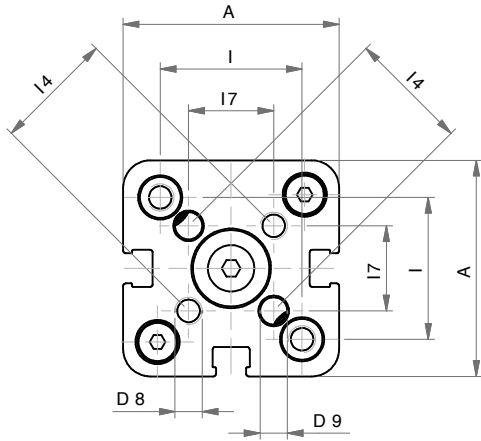
DOPPIO EFFETTO MAGNETICO STELO PASSANTE ANTIROTAZIONE

DOUBLE ACTING MAGNETIC ANTI-ROTATION WITH DOUBLE ROD

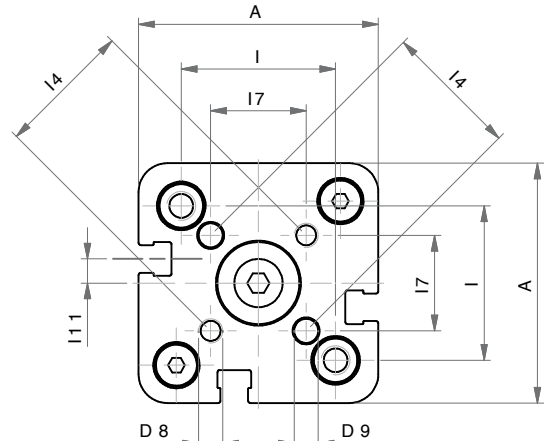


SERIE

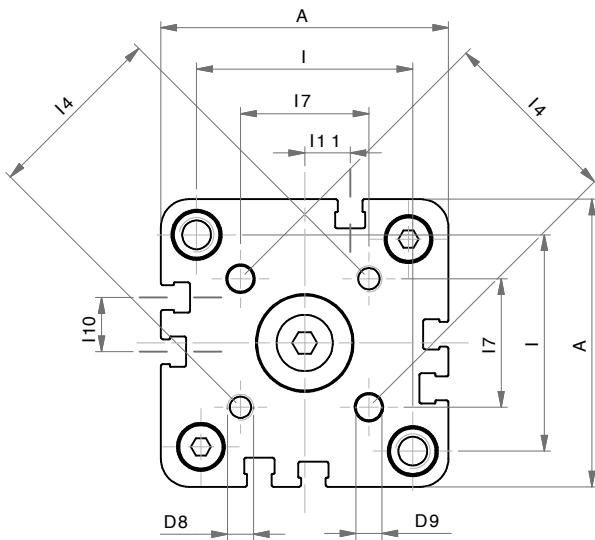
A



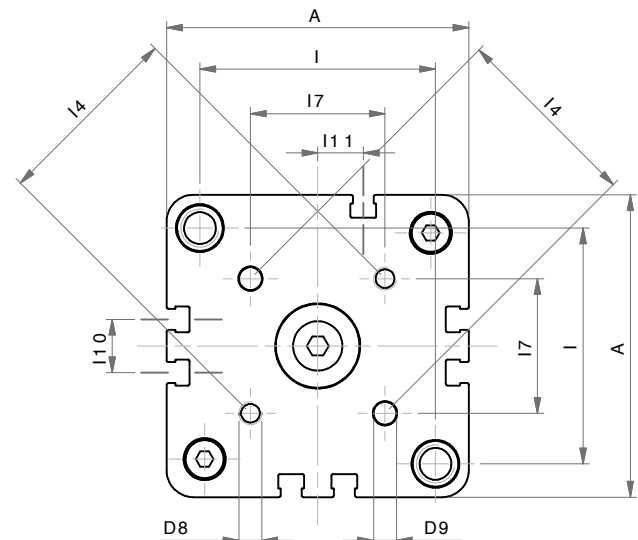
Ø16 - Ø20 - Ø25



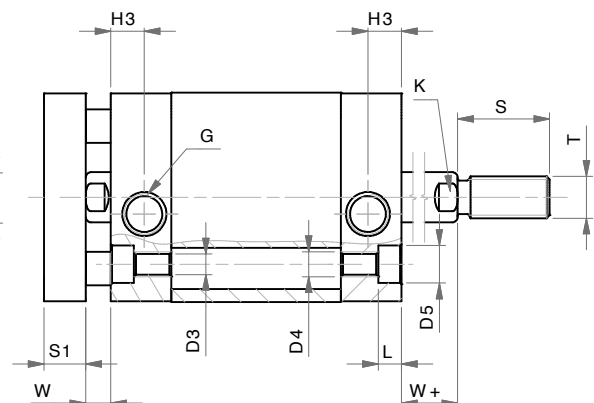
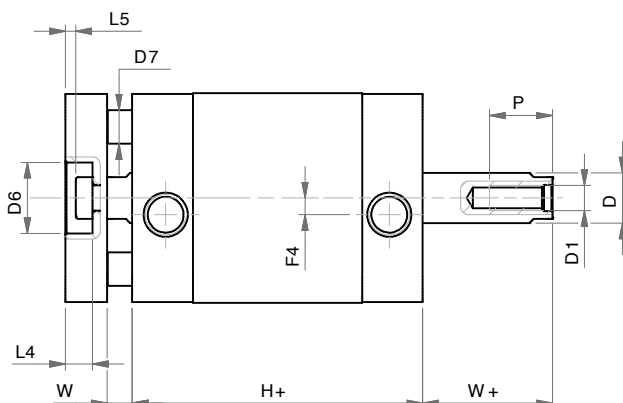
Ø32 - Ø40



Ø50



Ø63 - Ø80 - Ø100



DOPPIO EFFETTO MAGNETICO STELO PASSANTE ANTIROTAZIONE
DOUBLE ACTING MAGNETIC ANTI-ROTATION WITH DOUBLE ROD

DIMENSIONI - DIMENSIONS									
Ø	016	020	025	032	040	050	063	080	100
A	29	36	40	50	58	67	80	100	124
Ø D	8	10	10	12	12	16	16	20	25
D1	M4	M5	M5	M6	M6	M8	M8	M10	M12
D4	M4	M5	M5	M6	M6	M8	M10	M10	M10
Ø D5	-	-	-	9	9	10,5	13,5	13,5	13,5
Ø D6	9	11	14	17	17	22	22	28	30
Ø D7	5	5	6	8	10	10	10	14	14
D8	M3	M4	M5	M5	M5	M6	M6	M8	M10
Ø D9	3	4	5	5	5	6	6	8	10
F4	-	-	-	4	3	-	-	-	-
G	M5	M5	M5	G1/8	G1/8	G1/8	G1/8	G1/8	G1/4
H+	38	38	39,5	44,5	45,5	45,5	50	56	66,5
H3	8	8	8	8	8	8	8	8,5	10,5
I	18	22	26	32	42	50	62	82	103
I4	14	17	22	28	33	42	50	65	80
I10	-	-	-	-	-	12,5	14	18	35
I11	-	-	-	5	3	10,5	12	12	17,5
K	6	8	8	10	10	13	13	17	22
L	-	-	-	5,5	5,5	6,5	8,5	8,5	8,5
S	20	22	22	22	22	24	24	32	40
T	M8	M10x1,25	M10x1,25	M10x1,25	M10x1,25	M12x1,25	M12x1,25	M16x1,5	M20x1,5
P	11	12	12	15	15	17	17	17	22
W	4,5	4,5	5,5	6	6,5	7,5	7,5	8	10
W+	4,5	4,5	5,5	6	6,5	7,5	7,5	8	10
S1	6	8	8	10	10	12	12	14	14

+ = aggiungere lunghezza corsa (mm) - add stroke length (mm)

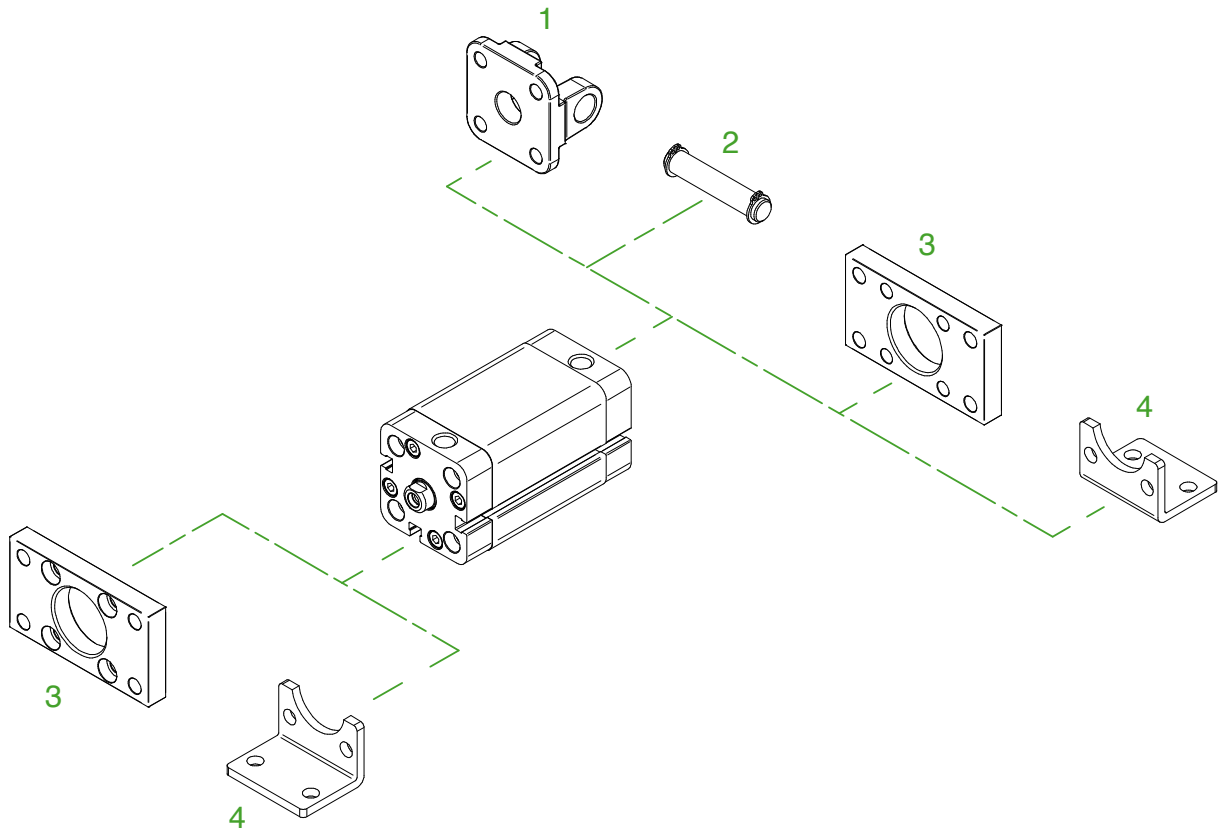
Ø	CORSE STANDARD - STANDARD STROKES
016	5 - 10 - 15 - 20 - 25 - 30 - 40 - 50 - 60 - 70 - 75 - 80 - 90 - 100 - 125 - 160 - 200
020	5 - 10 - 15 - 20 - 25 - 30 - 40 - 50 - 60 - 70 - 75 - 80 - 90 - 100 - 125 - 160 - 200
025	5 - 10 - 15 - 20 - 25 - 30 - 40 - 50 - 60 - 70 - 75 - 80 - 90 - 100 - 125 - 160 - 200
032	5 - 10 - 15 - 20 - 25 - 30 - 40 - 50 - 60 - 70 - 75 - 80 - 90 - 100 - 125 - 160 - 200 - 250 - 300 - 350 - 400
040	5 - 10 - 15 - 20 - 25 - 30 - 40 - 50 - 60 - 70 - 75 - 80 - 90 - 100 - 125 - 160 - 200 - 250 - 300 - 350 - 400
050	5 - 10 - 15 - 20 - 25 - 30 - 40 - 50 - 60 - 70 - 75 - 80 - 90 - 100 - 125 - 160 - 200 - 250 - 300 - 350 - 400
063	5 - 10 - 15 - 20 - 25 - 30 - 40 - 50 - 60 - 70 - 75 - 80 - 90 - 100 - 125 - 160 - 200 - 250 - 300 - 350 - 400
080	5 - 10 - 15 - 20 - 25 - 30 - 40 - 50 - 60 - 70 - 75 - 80 - 90 - 100 - 125 - 160 - 200 - 250 - 300 - 350 - 400
100	5 - 10 - 15 - 20 - 25 - 30 - 40 - 50 - 60 - 70 - 75 - 80 - 90 - 100 - 125 - 160 - 200 - 250 - 300 - 350 - 400

SERIE
A

ACCESSORI DI FISSAGGIO UNITOP

UNITOP MOUNTING PARTS

SERIE
A



POS.	CODE	DESCRIZIONE - DESCRIPTION
1	CFU---	cerniera femmina unitop - unitop female hinge
2	PCF---	perno per cerniera - pin for hinge
3	FU---	flangia unitop - unitop flange
4	PBU---	pedino basso unitop - unitop foot mounting

Dimensioni accessori: vedi sezione SERIE W
Accessories dimensions: see SERIE W chapter